

INDEX

PAGE	DESCRIPTION
01	Index
02	TRIP connector, EEPROM
03	MCU, CAN TRANSIVER, DB-9 , LDO

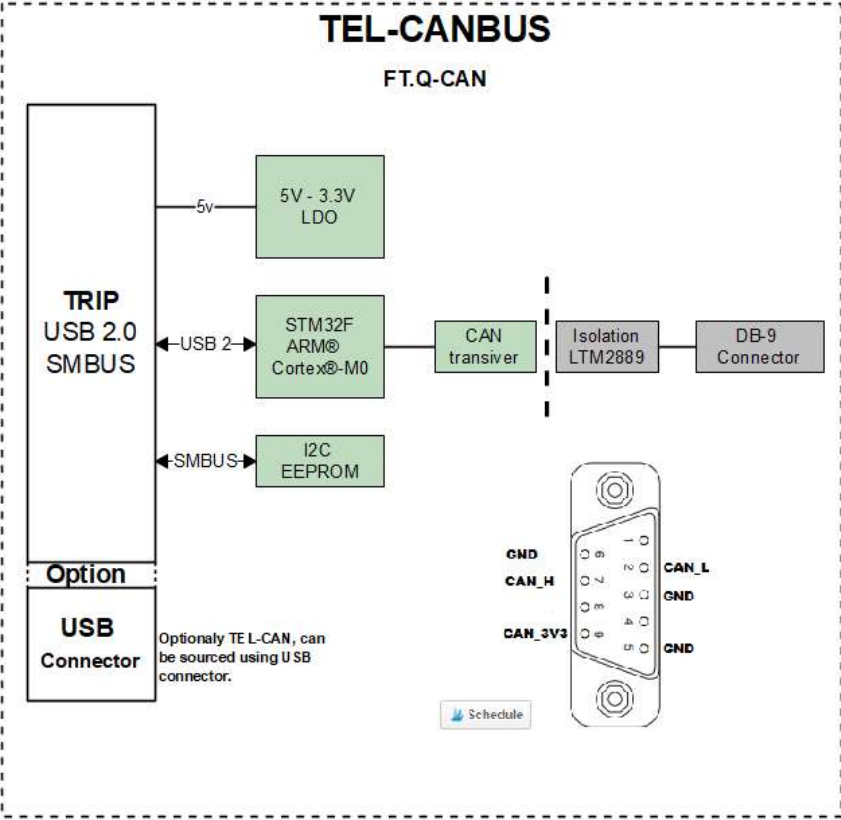
BOARD REVISION HISTORY

BOARD REVISION: 1.0

- INITIAL REVISION

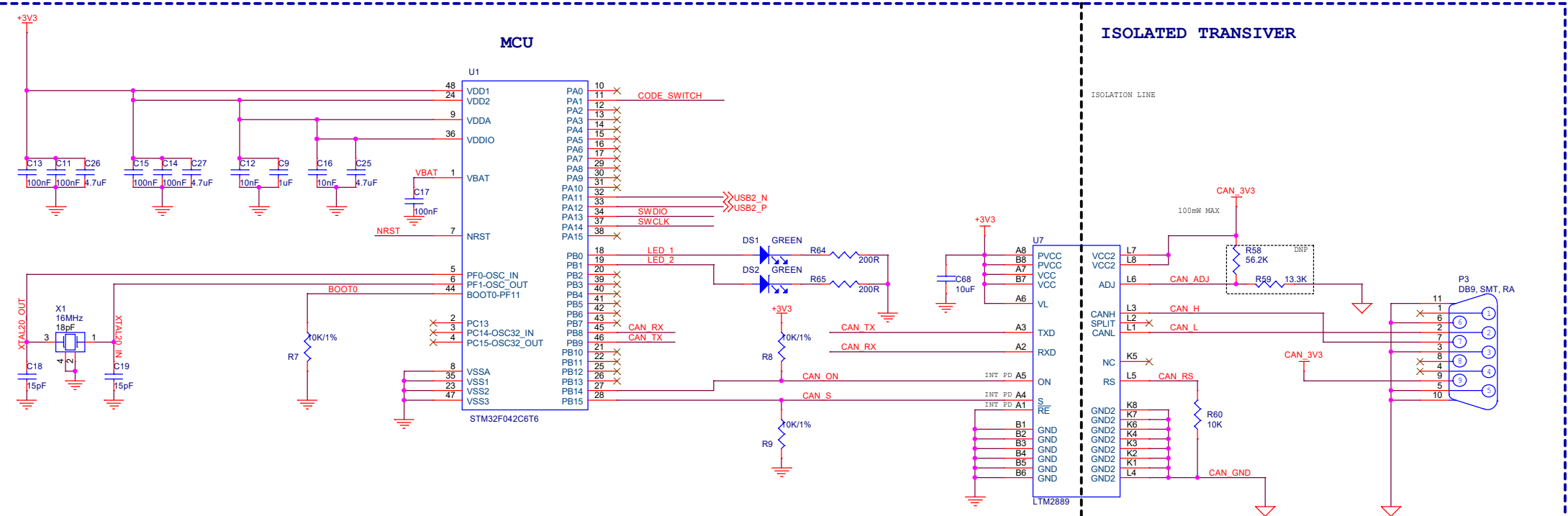
BOARD REVISION: 1.0.1

- Updated DB9 connector foot print



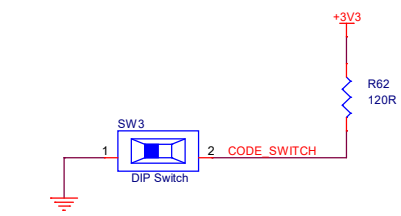
BOM ITEMS, NOT IN PCB

PCB1	LBL1	ZZ1	M1
PCB, FT.Q-CAN, Rev 1.0 P/N = 374F08P08C 8x8mm x 3 Barcode		P/N = 188Z10030 PARSER_VERSION_1.0 Mech part, Ribbon Latch, Base, Yellow	P/N = 290E010010

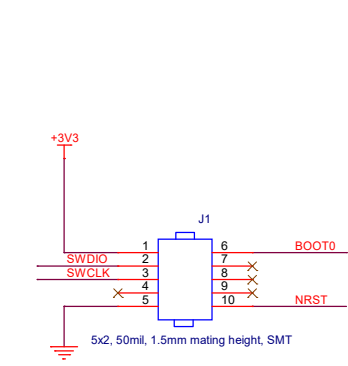


CODE VERSION SELECT

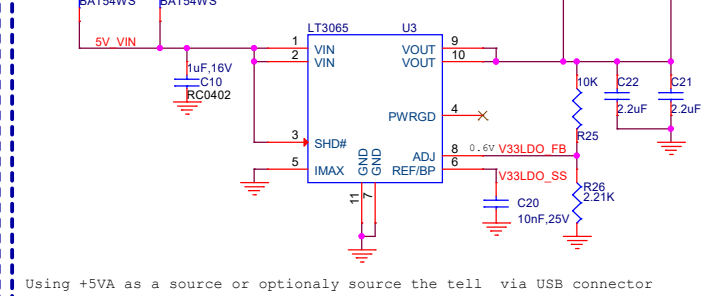
Implemented in SW detect on device boot
- High - USB to Uart implimentation
- Low - USB can device implimentation



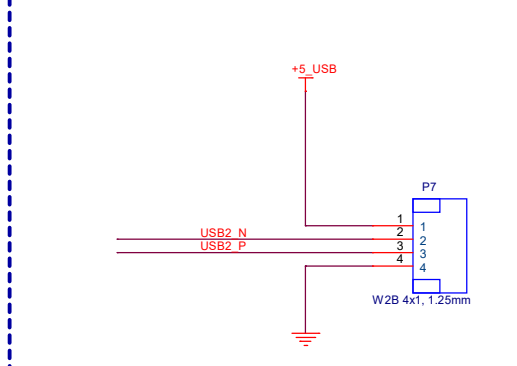
DEBUG CONNECTOR



5V TO 3.3V



USB CONNECTOR



TERMINATION

