

INDEX FT.EC-USB2V4

PAGE	DESCRIPTION
01	Index
02	TRIP CONNECTOR, EEPROM
03	USB HUB, USB CONNECTORS

BOARD REVISION HISTORY

BOARD REVISION: 1.0.0

- INITIAL REVISION

REVISION: 1.0.1

- Added switch for Controll power down from S3
- Added TP for external power supply
- Added USB connector

REVISION: 1.0.2

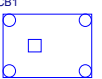

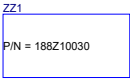
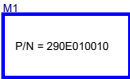
- Added DC2DC for optionaly powering the USB hub from externaly 12v

REVISION: 1.0.3

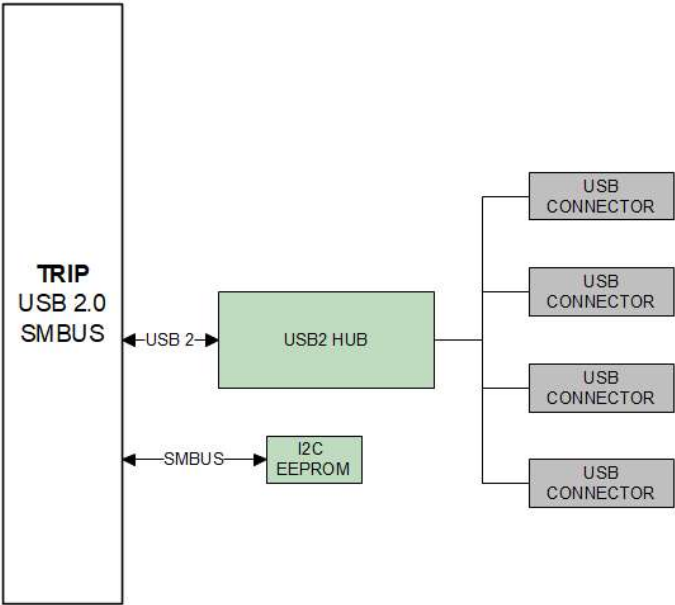
- Added Cap to USB Connector VIN
- Replaced RN1 by 0402 Resistors
- Removed diode in DC2DC output
- Added External power protecion block
- Added Caps on 12Vin
- Added page numberings to off page connections


- X.X.Y - "y" - Is internal reference revision not represented on PCB

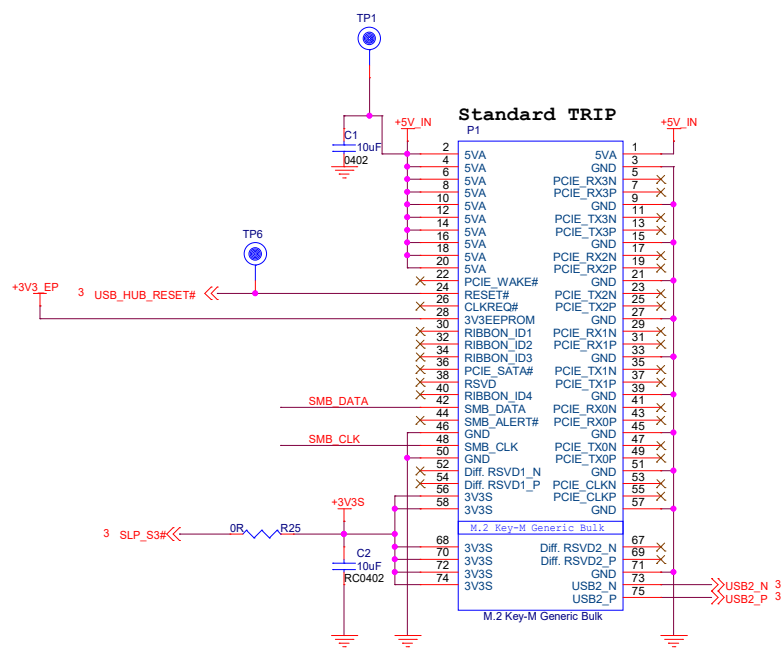
BOM ITEMS, NOT IN PCB

PCB1	LBL1	ZZ1	M1
			
PCB, FT.EC-USB2V4, Rev	P/N = 374F08P08C	PARSER_VERSION_1.0	Mech part, Ribbon Latch, Base, Yellow

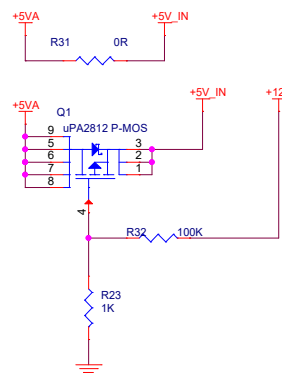
FT-USB2X4V



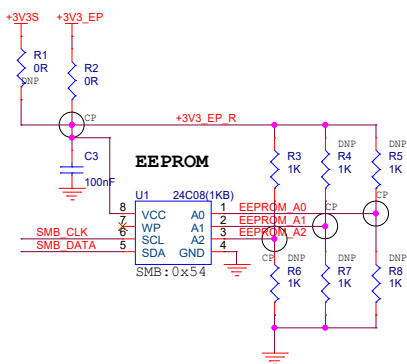
		CompuLab Ltd. (972) 4 8238567 17 HaYetsira Street Yokneam Illit, Israel 2069208 All Right reserved. Unauthorized duplication prohibited	
Size A3	Title 01- INDEX	Rev 1.0	
Date:	Document Number: <Doc>	Sheet 1 of 4	
	Sunday, June 14, 2020		



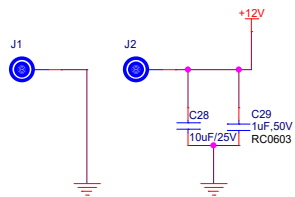
EXTERNAL POWER PROTECTION



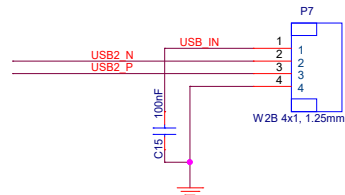
I2C EEPROM



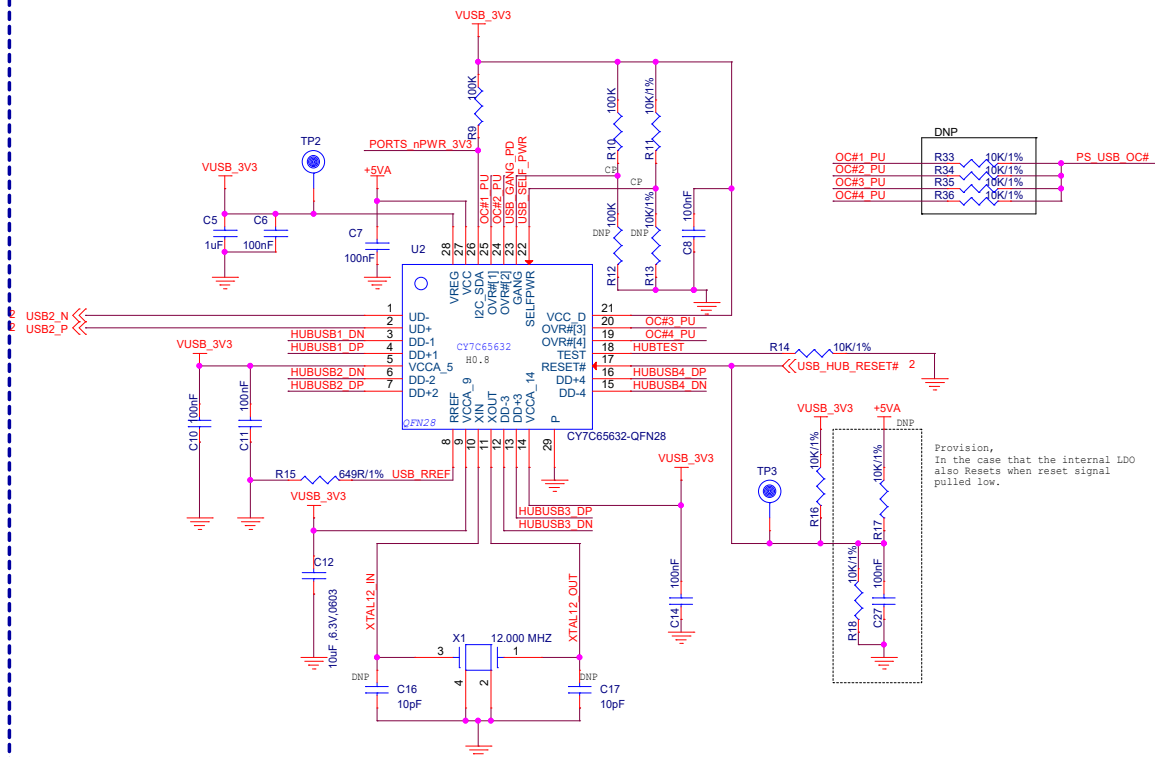
EXTERNAL POWER



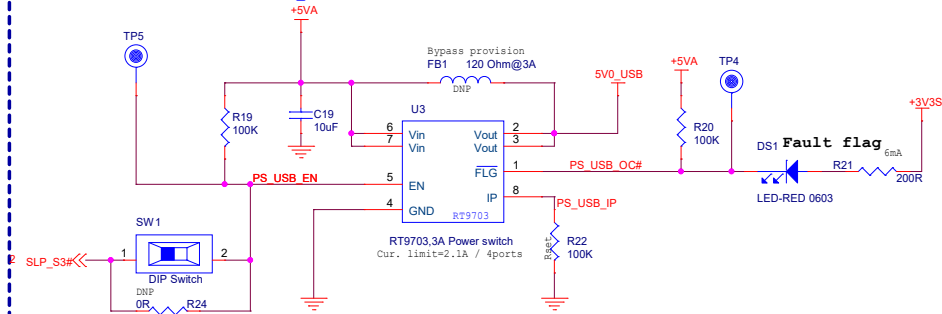
USB CONNECTOR



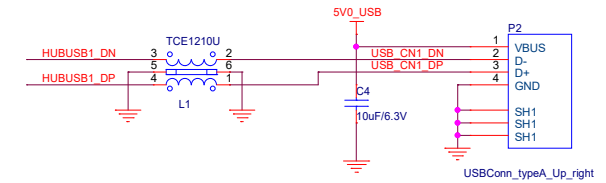
USB2 HUB



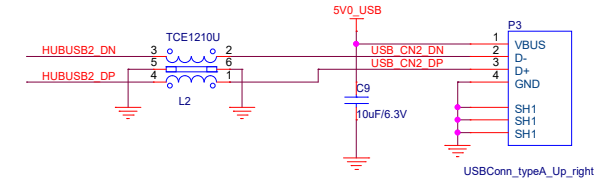
USB Power, OVC protection



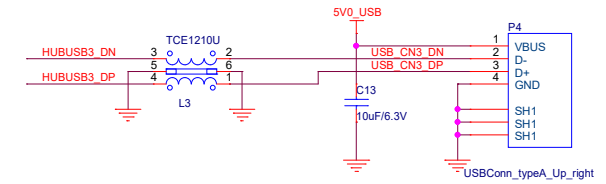
USB CONN 1



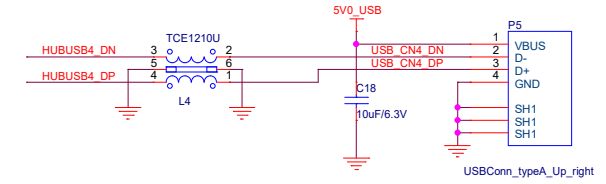
USB CONN 2



USB CONN 3



USB CONN 4



USB External Connection Power

VCC_5V (5.5A)

$$V_{out} = 0.8 * (1 + 64.9 / 12.4) = 4.98v$$

$$V_{out} = 4.987v$$

$$I_{out\ max} = 2.9A$$

